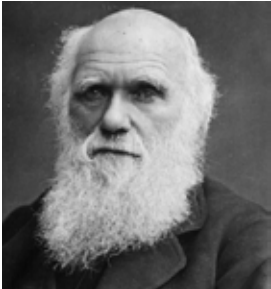


BEYOND THE GALAPAGOS AND INTO THE CORAL TRIANGLE

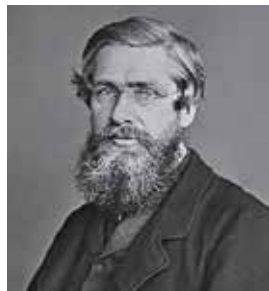
Experience the Wonders of Raja Ampat with SeaTrek Sailing Adventures



Throughout the year along the equator, the sun rises and sets almost exactly 12 hours apart, giving equal parts darkness and equal parts sunshine, and providing the perfect amount of heat and energy to allow life in so many unique forms to flourish.

Along this line, almost 15,000 kilometres apart, sit two archipelagos of such fascinating natural diversity that they formed the basis of the theory of Evolution by Natural Selection; the first being Charles Darwin's Galapagos Islands, and second being Indonesia, and in particular, Alfred Russel Wallace's Raja Ampat.

The world's best travel websites and blogs abound with tales of these two exceptional island groupings. Both have played an integral role in determining the scientific basis of natural selection, both are best explored by boat, both are made up of incredible volcanic landscapes and vistas, and both, of course, present some of the most



stunning underwater life on the planet, as well as a great biodiversity on both land and sea. You need not be a professional diver or bird-watcher or scientist to enjoy what these two famous archipelagos have to offer. An internal yearning for beauty, nature and adventure is all that is required.



SeaTrek
SAILING ADVENTURES

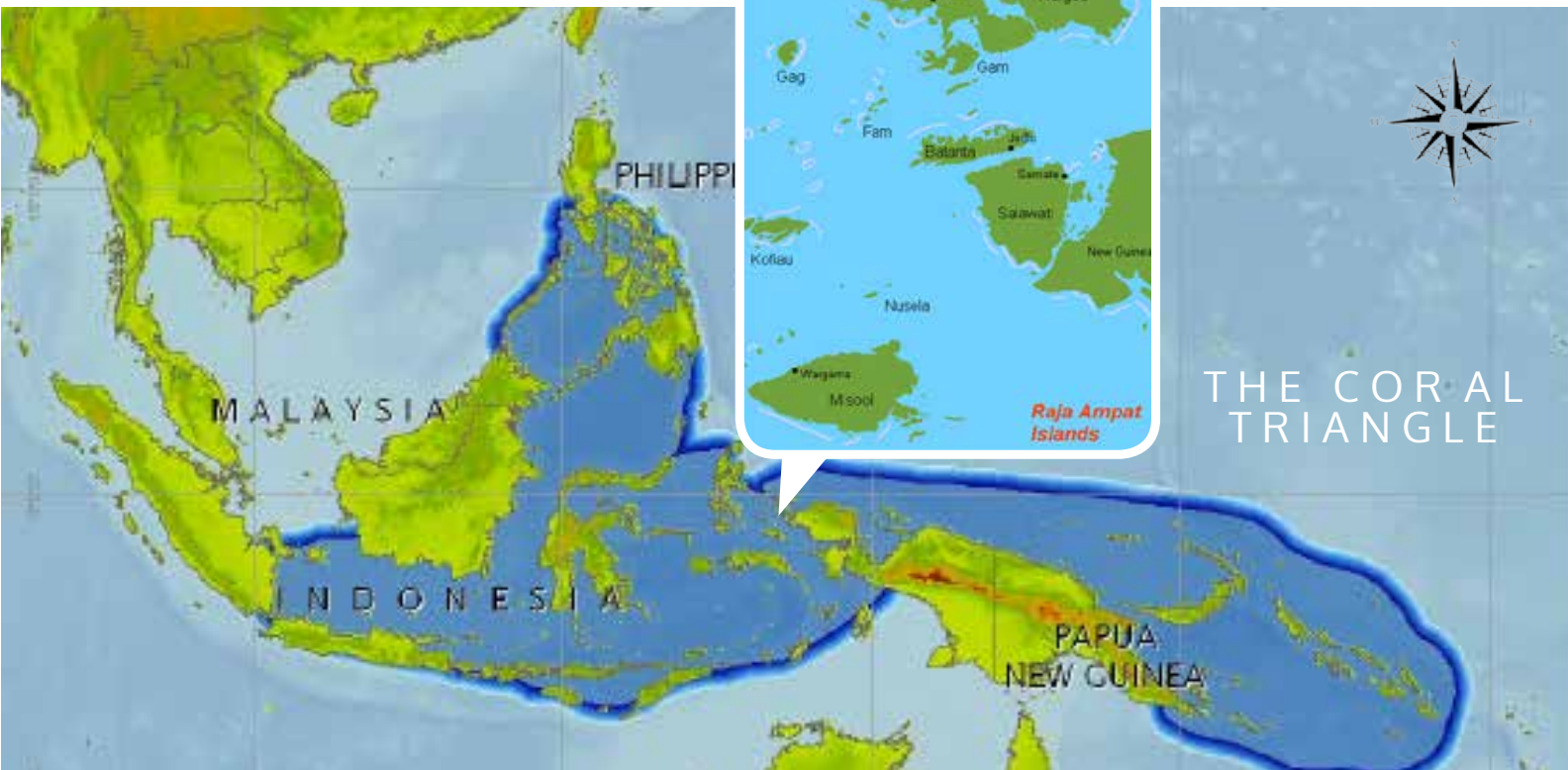
wonderful
indonesia

WHERE AND WHEN?

Indonesia's 17,000-island archipelago occupies a distance similar in breadth to the United States. Officially, Raja Ampat is part of the Indonesian province of West Papua.

Unofficially, this 'underwater Amazon' lies at the very heart of what scientists have labelled the Coral Triangle, a vast triangular bioregion spanning Indonesia, Malaysia, The Philippines, Papua New Guinea, Timor Leste and the Solomon Islands.

With a high season from November to March, Raja Ampat is home to the most diverse, extraordinary and plentiful marine life on the planet, including over 500 species of coral. It is, without a doubt, one of the world's least visited but most memorable adventure-destinations, with something special for every kind of visitor.



C U L T U R E



Indonesia is home to hundreds of diverse ethnic groups and indigenous cultures. In the huge region known as Raja Ampat, the local people live and work as they have for hundreds of years. Whether you're taking in a spice market, visiting a pearl farm, watching local dancers, observing weaving techniques, or playing with a group of young children, it is the constant smiles and good humour of these island people that will complete any trip to this part of the world.

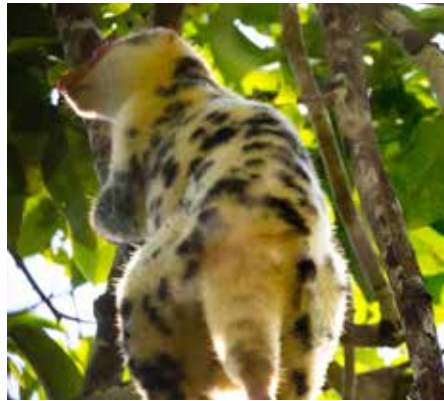
THE UNDERWATER WORLD



Earning its top billing as the epicentre for marine biodiversity, the clear turquoise waters of Raja Ampat thrive with over 75 percent of the world's known coral species, more than 1,300 species of coral reef fish, five species of rare and endangered sea turtles, and 13 marine mammal species. This immense, protected marine park encompasses over 12,000 square kilometres of reef.



THE WALLACE LINE'S WILDLIFE



You need not be a seasoned birdwatcher to see and appreciate the dazzling birdlife that lured British naturalist, Alfred Russel Wallace, to the region more than 150 years ago. Raja Ampat is home to a truly impressive menagerie, including the Waigeo cuscus, all manner of butterflies and reptiles, and a profusion of birds, including the endemic Bruijn's brush-turkey and two types of bird of paradise. The unsung hero of the work behind "The Origin of the Species," Wallace observed a clear 'line' through Indonesia, which identified species to the west as Asiatic and to the east, Australian in origin. Regardless, witnessing the curious bobbing, flapping and weaving display dance of the Red Bird of Paradise, or the elaborate courtship ritual of the brilliantly coloured Wilson's Bird of Paradise, is an incredible experience and a rare privilege.

ADVENTURE AND RELAXATION



Cruise Raja Ampat aboard a traditional wooden pinisi schooner and you will marvel at both the marine wonderland under the water and the magnificent landscape above the surface. In a single day, you may snorkel among the flourishing aquatic life on the vibrant reefs; venture into the depths of a pristine saltwater lake, which is the habitat of three different species of rare stingless jellyfish; motor up an inlet looking for indigenous wildlife with an expert guide; relax on the deck with a good book; or ply the waters on a stand-up paddle-board or sea kayak.

A SUBLIME TROPICAL PARADISE



The island nation of Indonesia, with Bali as its tourism hub, is the very definition of island paradise. The limitless skies over Raja Ampat are bright and blue, reflecting on gin-clear waters, uninhabited forest-covered islands and endless stretches of white sand beaches of sublime beauty.



SAILING ADVENTURES

ABOUT SEATREK SAILING ADVENTURES

Based in Bali, SeaTrek is the premier adventure sailing operator in Indonesia, with over 25 years of experience showing guests the distinctive beauty and charm of the archipelago's exotic islands and seas. Our vessels have highly-trained crews and multilingual tour guides and we offer a variety of cruises to suit those looking for the unique natural wonder, history and cultures of this far-flung corner of the world.



www.cruiseconnections.co.nz

Tel: 09 972 2030 • 0800 500 180

1B Roberta Ave, Glendowie, Auckland E: enquiries@cruiseconnections.co.nz